



SAFESMART
ACCESS

Reaching new heights

ADJUSTASTAIRS



Table of **CONTENTS**



About SafeSmart	03
AdjustaStairs Story	04
AdjustaStairs - How Do They Self-Level and Attach?	05
AdjustaStairs Advantages	06
AdjustaStairs Range	07
Fibreglass AdjustaStairs	09
Truck Access AdjustaStairs	10
AdjustaStairs Accessories	11 - 16
Industry Applications	17 - 22



SafeSmart Access

SafeSmart Access is a designer and manufacturer of height access equipment, edge protection and scaffolding.

An increase in site efficiency and safety whilst working at height is at the core of our purpose.

Our Mission

Improving the Safety, Speed, and Efficiency of your Worksites.

AdjustaStairs **Story**

There has been a growing drive on construction projects worldwide to eliminate unsafe ladders, without the hassle of building up a scaffold to access between levels on sites. That's why SafeSmart are pleased to introduce the AdjustaStairs. This product is quickly becoming a popular choice for industries and trades that need safe and efficiency temporary multi-level height access.

It is our customer base who helped us identify this need in the market. And since designing and developing our first set of portable stairs for those clients, the AdjustaStair system has evolved into a recognisable and trusted product around the world.

When looking for market-leading portable stairs, look no further than AdjustaStairs.

Summary of Benefits:

- Safer than a ladder - allow multiple users at once to carry tools and equipment between levels
- 5 minutes to set-up
- Instant Adjustment - simply place the stairs at the level you require, and the treads will self-level to suit the height. Once the handrails are raised and the stairs fixed top and bottom, they're ready to use - no additional sign-off or certification required.
- Marine Grade Aluminium means it's very tough and durable whilst also being very lightweight.

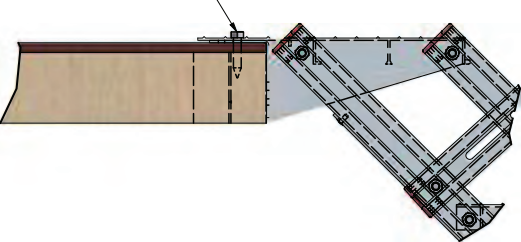


AdjustaStairs: How Do They Self-Level and Attach?

This innovative design allows the treads to move with the stringers. Treads will self-level to provide a firm, flat surface at the desired height. Once level, they are fixed to the support surface as shown below:

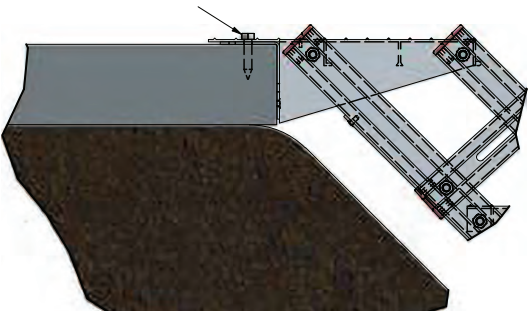
TIMBER FIXING - TOP STEP

Hex washer Type 17 (14 Gauge) x 50mm Screw
Min. 2 Qty



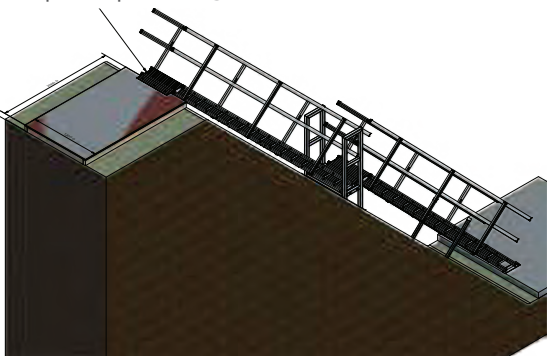
CONCRETE FIXING

Ø10 x 50mm Concrete Anchor Screw
Min. 2 Qty.
Min. Concrete strength 25MPa

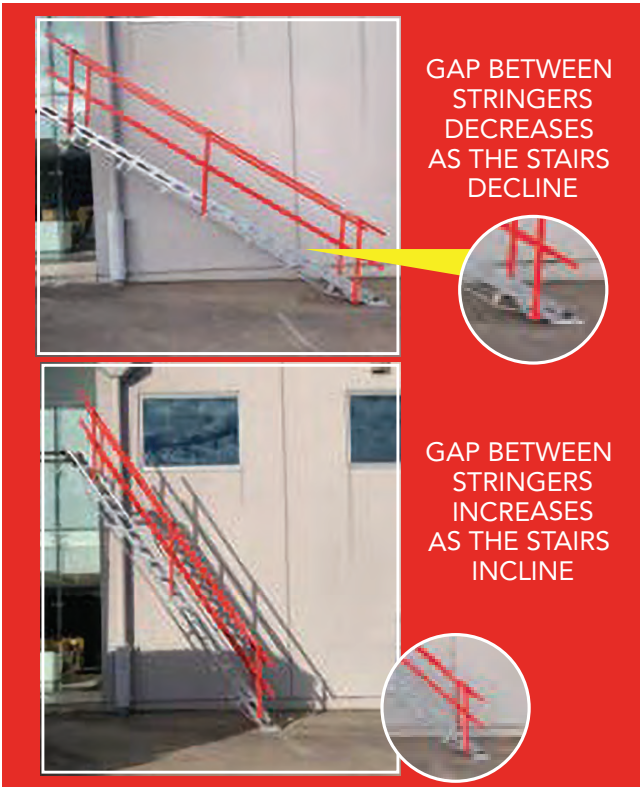


FIXING DETAILS

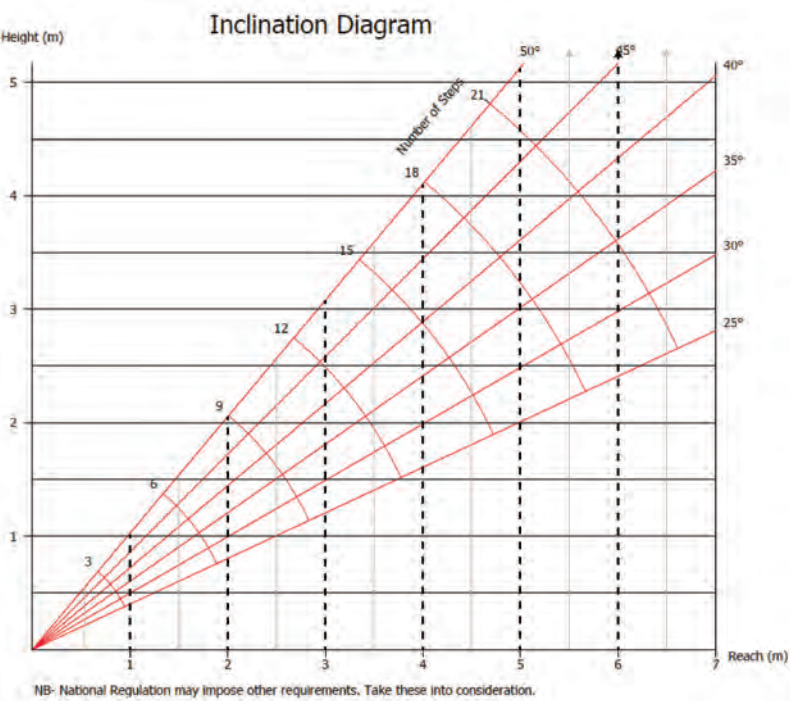
Top Step Fixings as noted above:



Scan to View
The Video



Inclination Chart



AdjustaStairs Advantages



500KG

Weight Rating

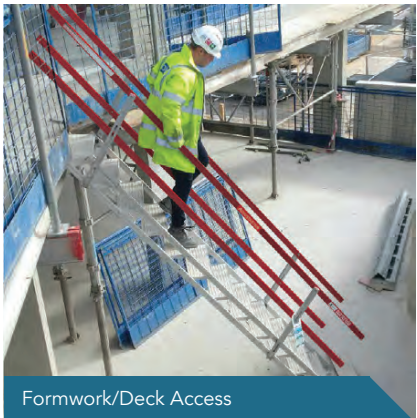
2.5Pa

Weight Rating

Complies with
BS EN 12811-1

**Join Stairs for
Batter Access**

**Replacement
Parts Available**





Self-Levelling Aluminium Stairs 600mm Wide

Code	Type	Lying Length	Height Adjustment Range	Weight
210290	3 Step	0.8m	0.4 - 0.7m	27kg
210291	6 Step	1.8m	0.9 - 1.4m	41kg
210292	9 Step	2.7m	1.4 - 2.0m	57kg
210293	12 Step	3.7m	1.8 - 2.7m	74kg
210295	15 Step	4.8m	2.2 - 3.4m (incl. truss)	102kg
210296	18 Step	5.4m	2.7 - 4.1m (incl. truss)	119kg
210297	21 Step	6.2m	3.3 - 4.6m (incl. truss)	138kg



Self-Levelling Aluminium Stairs 1200mm Wide (2-Way Access)

Code	Type	Lying Length	Height Adjustment Range	Weight
210821	3 Step	0.8m	0.4 - 0.7m	38kg
210822	6 Step	1.8m	0.9 - 1.4m	59kg
210823	9 Step	2.7m	1.4 - 2.0m	84kg
210824	12 Step	3.7m	1.8 - 2.7m	108kg
210825	15 Step	4.8m	2.2 - 3.4m	153kg
210826	18 Step	5.4m	2.7 - 4.1m	168kg



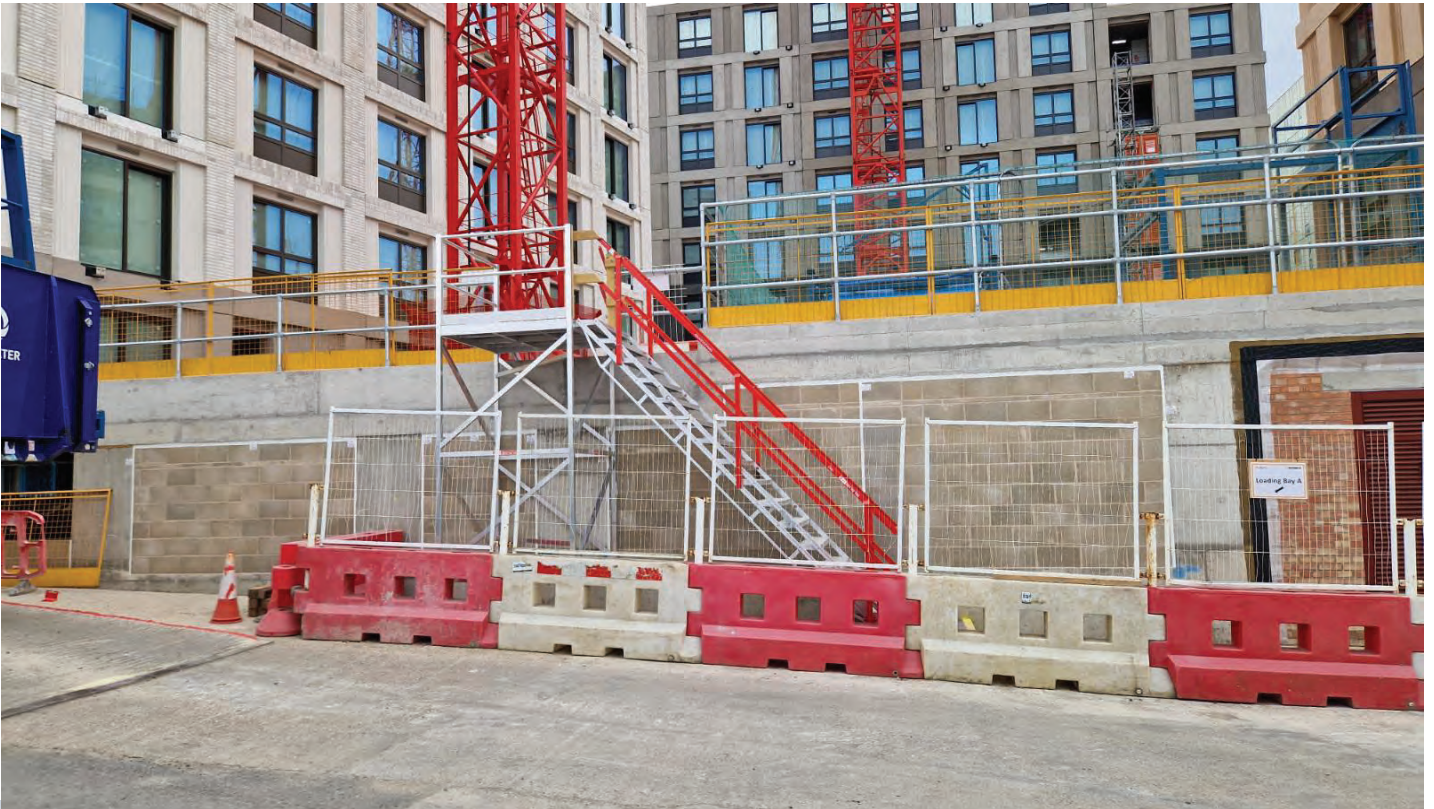
Features and Benefits

- Adjustable aluminium safety stair
- Treads self level within a height range
- Safe, fast, easy access between floors decks and into trenches
- Handrails fold flat for easy storage and no lost parts
- Durable - built to last
- Modular mid-landings available



INDUSTRY STORY:

Double-Width Stairway to Success

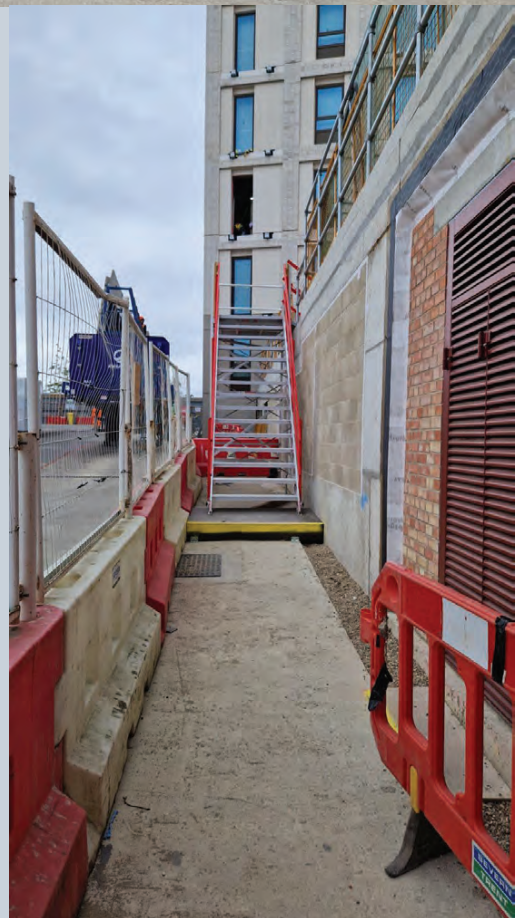


THE CHALLENGE

In large-scale construction projects, every minute counts, and ensuring worker safety is paramount. For Mace, the challenge was clear; downtime was becoming a significant issue with workers frequently forced to take longer, indirect routes to reach their work zones, resulting in lost productivity. Beyond this, Mace also needed a reliable emergency route, compliant with stretcher access requirements to ensure that in the event of an incident, workers could be evacuated quickly and safely.

THE SOLUTION

SafeSmart solved the challenge with our renowned Double Width AdjustaStairs, with a secure mid-landing, designed to facilitate two-way traffic and emergency stretcher access. This innovative solution allowed workers to move efficiently between levels, cutting down on travel time, while ensuring safety standards were met.



THE RESULT

The impact of SafeSmart's Solution was immediate and profound. Mace now have a quick and compliant emergency route, capable of accommodating stretcher access in case of an emergency. Equally as important, workers are now saving valuable time every day by taking the more direct route provided by the AdjustaStairs.



Fibreglass AdjustaStairs

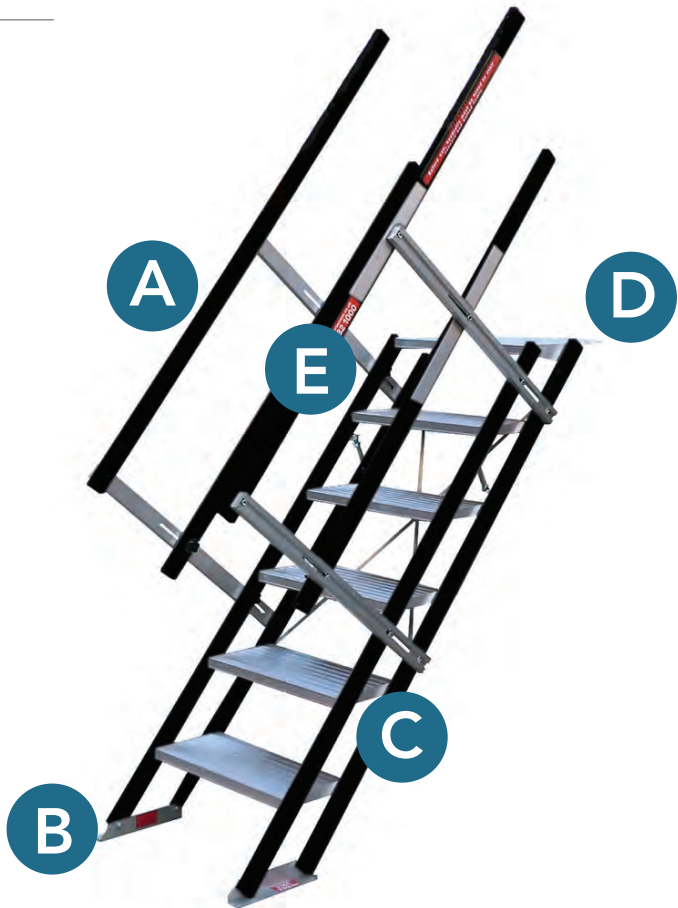
Code	Width	Height Adjustment	Steps	Weight
210742	600mm	0.9 - 1.4m	6 Steps	35 kg

150 KG
Weight Rating

Complies with
BS EN 12811-1

Features and Benefits

- Developed specifically for access to track from platform level
- No fixings required
- Complies with BS EN 12811-1
- Treads self-level to suit platform heights of 0.9m - 1.4m
- Does not require the Network Rail PA process and can be classed as uncontrolled equipment.



KEY COMPONENTS

Code	Description	Code	Description
A	Folding Handrail	D	Ribbed rubber grip section
B	Large support foot	E	Strut lock fittings
C	Anti-slip self levelling stair treads		



Truck Access AdjustaStairs

Code	Description	Weight
210294	Portable Stair for Truck Access 6 Step	41 kg

2.5 kPa
Weight Rating

Complies with
BS EN 12811-1

Features and Benefits

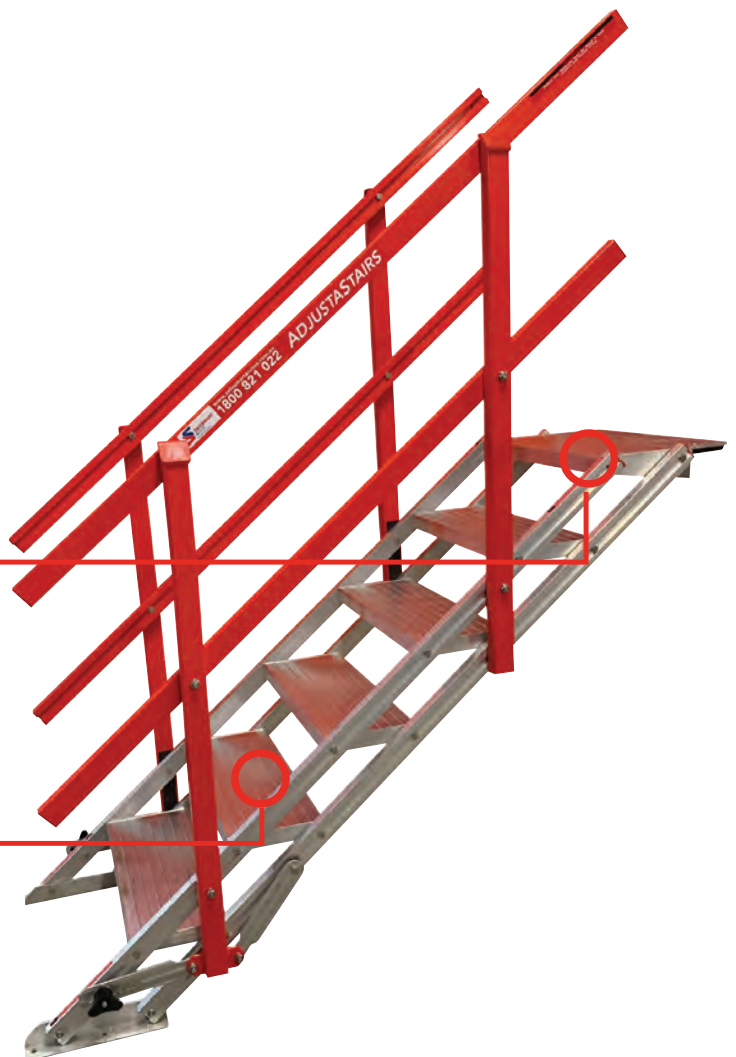
- Developed specifically for access to truck trays
- No fixings required
- Treads self level to suit tray heights of 0.9 - 1.4m



RIBBED RUBBER
GRIP SECTION



SELF LEVELLING
STEPS



AdjustaStairs Accessories

Step Extension

Code	Description	Width	Height
210275	Step Extension with 775mm Landing to suit 600mmW stairs	600mmW	600mmH
210276	Step Extension with 775mm Landing to suit 1200mmW stairs	1200mmW	600mmH

- Add 600mm of height to either single or double width AdjustaStairs
- Can be used as an independent stair
- Suits applications where 18 steps or more are required



Handrail Extension

Code	Description
100145	AdjustaStairs D-Handrail Extensions

- Eliminate any risk of gaps or exposed areas
- Increase safety of operatives on the top stair



Scaffold Mount Hook

Code	Description
210819	Scaffold Mount Hook

- Replaces the AdjustaStairs top step and clamps stairs to a scaffold tubular ledge.
- Compatible with 600mmW AdjustaStairs

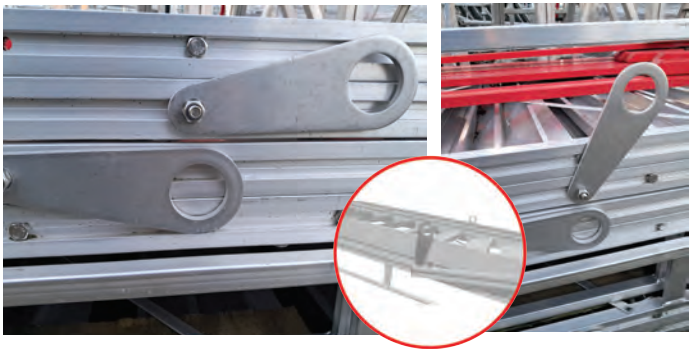


AdjustaStairs Accessories

Lifting Lugs

Code	Description
210838	Lifting Lugs

- Attach to any aluminium AdjustaStairs model
- Compatible with 600mmW or 1200mmW AdjustaStairs



AdjustaRail

Code	Description
108260	AdjustaRail 1.0m Handrail Extension with Post for AdjustaStairs - Per Each
119640	AdjustaRail for joining AdjustaStairs Up and Over Range 1100mm - 2000mm 2 Pairs (4no)
210929	AdjustaRail for joining AdjustaStairs Up and Over Range 800mm -1500mm Pair (2no)

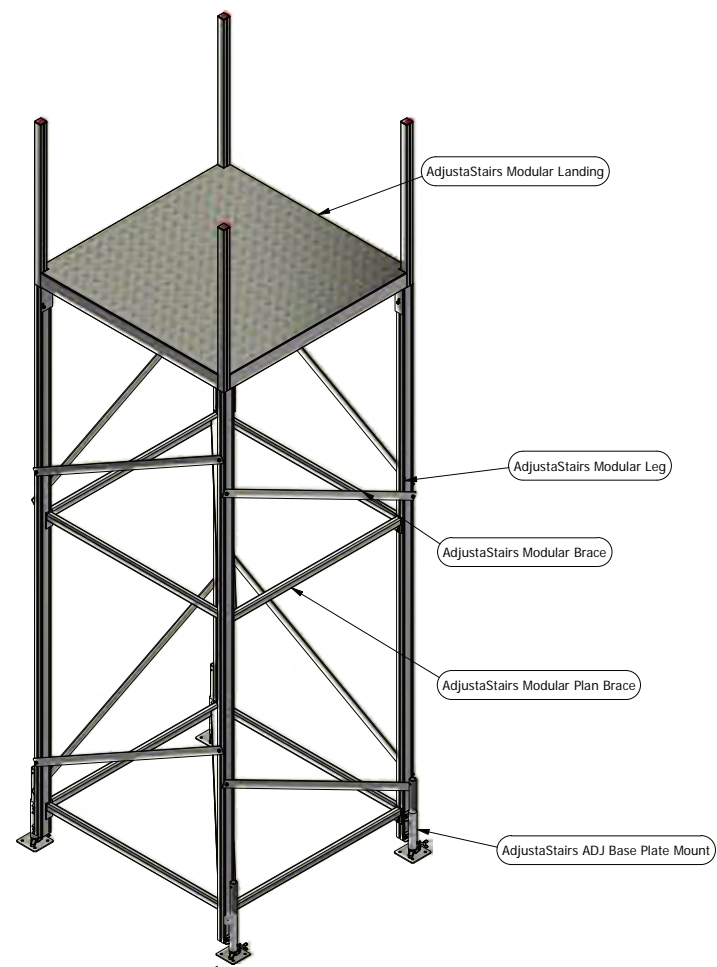


AdjustaStairs **Accessories**

Mid Landing System

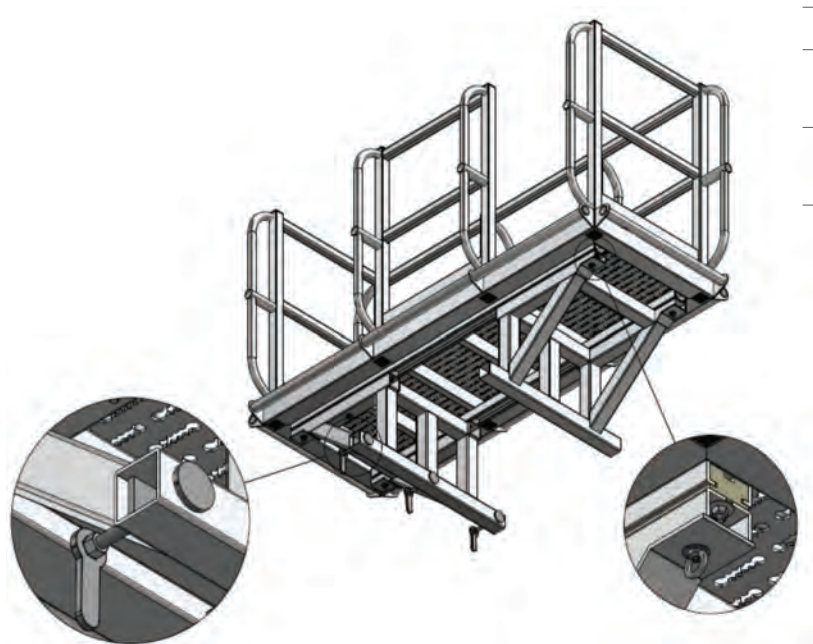
Code	Description
210925	AdjustaStairs 1mH Mid Landing
210926	AdjustaStairs 2mH Mid Landing
210927	AdjustaStairs 3mH Mid Landing
210928	AdjustaStairs 4mH Mid Landing

- AdjustaStairs Mid Landing System available for landing heights 1 - 4m
- 1500mm x 1500mm landing
- Custom sizes available for single and double width AdjustaStairs



AdjustaStairs **Accessories**

Wall Bridge Landings



Code	Description
210950	AdjustaStair Wall Top Landing Single Width - Sliding Version
210954	AdjustaStair Wall Top Landing Single Width - Standard Version



Embankment Landings



Code	Description
210940	AdjustaStair Mid Landing Single Width Embankment Version
210942	AdjustaStair Mid Landing Double Width Embankment Version



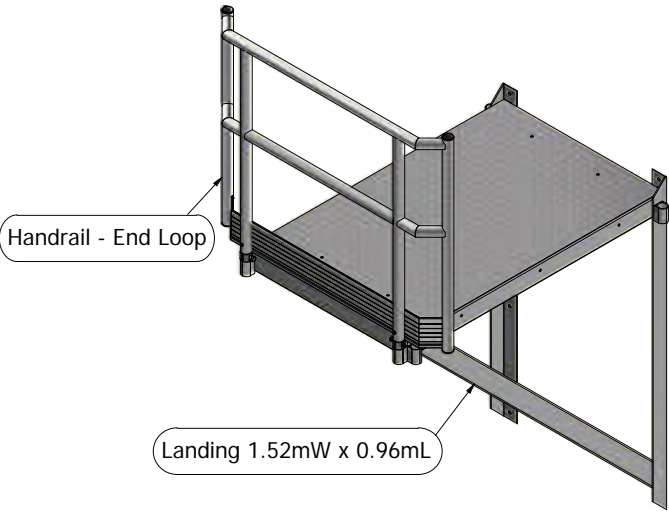
AdjustaStairs Accessories

Hanging Landing

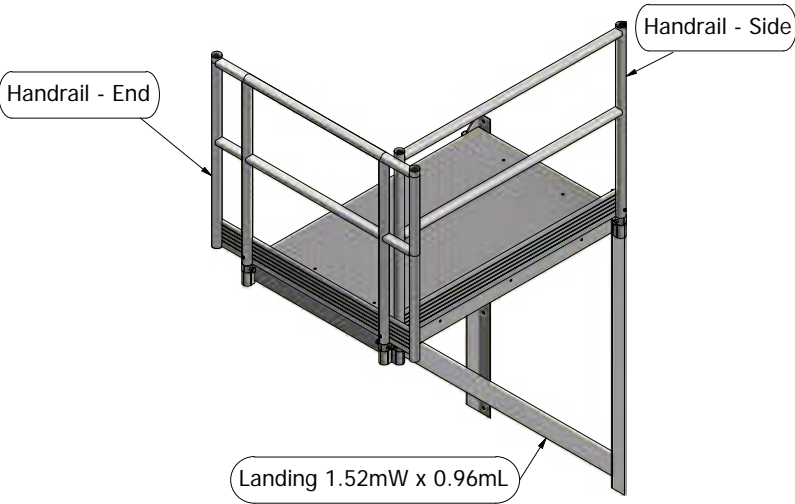
Code	Description
210278	AdjustaStairs Hanging Landing - 1.52mW x 0.96mL with wall braces
210919	AdjustaStairs Hanging Landing End Loop Handrail - suits 1200mmW configuration
210920	AdjustaStairs Hanging Landing End Flat Guardrail - suits 600mmW configuration
210921	AdjustaStairs Hanging Landing Side Flat Guardrail - suits 600mmW configuration

- Perfect to create a long stair system into a pit or shaft
- Much smaller footprint than a scaffold tower - perfect for sites where space is limited

LANDING WITH LOOP END GUARDRAIL
(1200mmW Stair Configuration)



LANDING WITH END & SIDE GUARDRAIL
(600mmW Zig-Zag Stair Configuration)





THE CHALLENGE

At Dorking Sewage Treatment Works, Thames Water and Galliford Try Infrastructure needed a safe and efficient way for workers to access a large treatment tank - both externally and internally. Traditional scaffolding was ruled out due to time and maintenance concerns.

THE SOLUTION

SafeSmart provided a modular stair and landing solution: Adjustastairs running down the outside of the tank, supported by lightweight hanging landings bolted directly into the structure. These pre-welded platforms required just 8 bolts to install, and handrails could be added or removed as needed. A wall bridge landing spanned the tank's top, linking both sides for full access.



THE RESULT

The aluminium construction prevented rust, while the compact footprint maximised working space. The system was easy to install, visually clean, and reusable for future projects. With no scaffolders or inspections required, and ongoing site support from SafeSmart, the access setup helped the project run smoothly - saving time, money, and effort.

Industry Applications - Rail Access

- Electrically-safe fibreglass AdjustaStairs may be required for use inside the rail corridor.
- Set up in seconds for access from platform level to the rail line.
- Clamping options available to avoid drilling into rail platform.



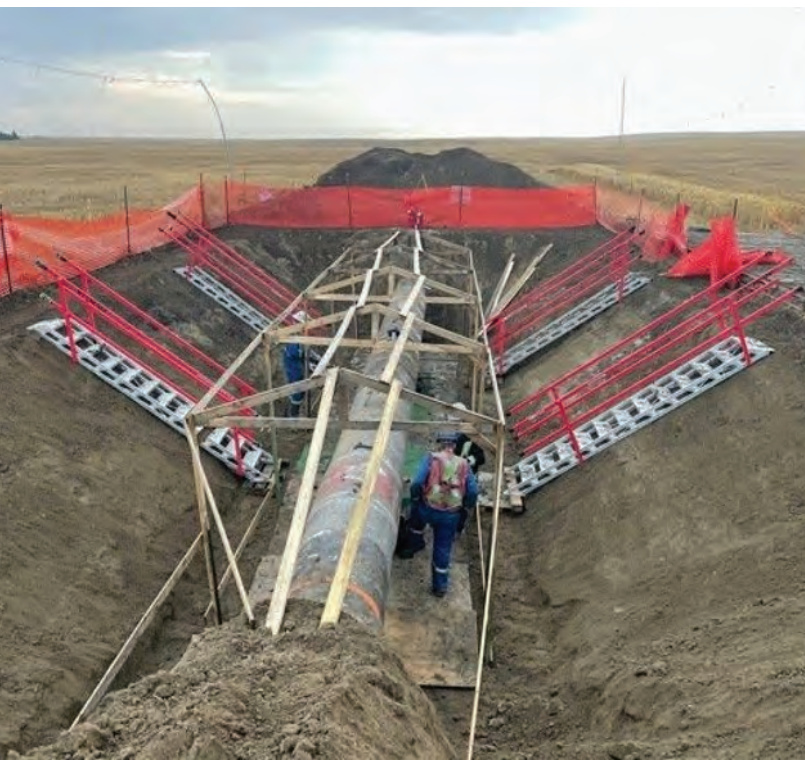
Industry Applications - Truck Access

- Truck AdjustaStairs have additional design features including rubber buffers for positioning on truck bed - No fixing required.



Industry Applications - **Excavation Access**

- Adjustability of the stairs makes them ideal for excavation access, where levels are constantly changing.



Industry Applications - **Formwork Access**

- Use AdjustaStairs instead of a ladder for your primary or secondary access.
- Much quicker to set up and move than a scaffold tower.
- 1200mmW version is ideal for areas with high foot traffic - facilitates two-way access.



Industry Applications - **Container/ Site Office Access**

- 600mm or 1200mm wide AdjustaStairs can be used for second level container access.
- Entry Landing can be configured and constructed from Proscaf to suit container door width.

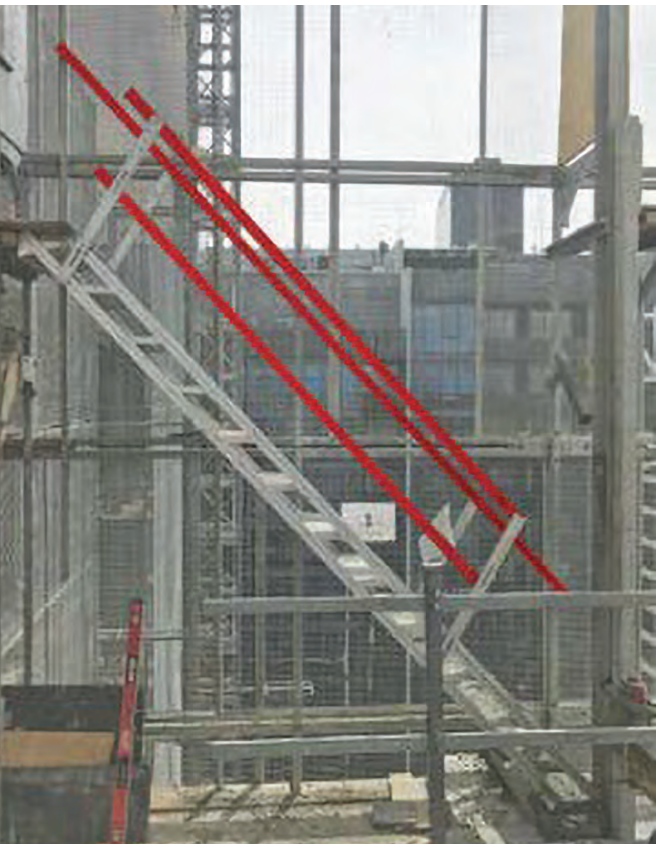


Industry Applications - **Canal Access**

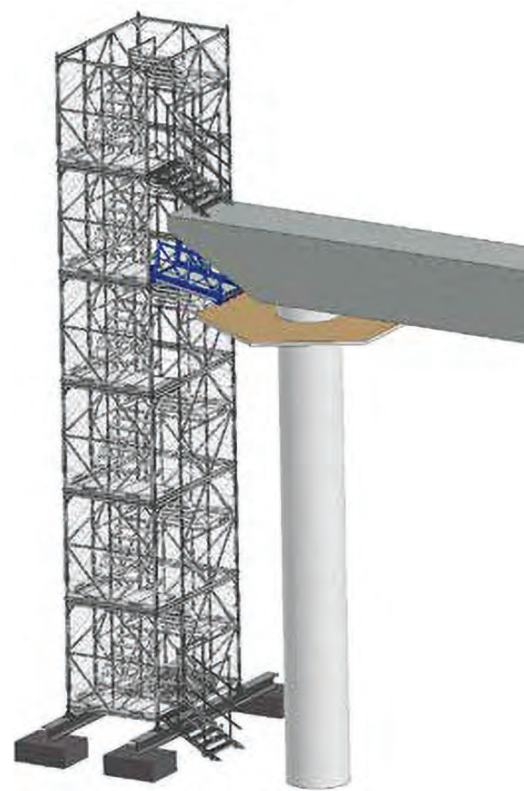


Industry Applications - **Formwork Screen Access**

- Adjustable feature means that the stairs can be simply fitted inside formwork screens.
- Stairs can be custom made to length to fit different screens.



Industry Applications - **Jump Form Access**



Industry Applications - **Batter Access**

- Stairs will self-level to suit the angle of the batter.
- Multiple stairs can be joined end to end to span any batter length.
- Top and mid landings can be constructed from Proscaf.
- Fixing options include: bolting top of stairs to timber sleeper or structural ply, pinning into dirt at the bottom.



Industry Applications - **Pier Access**



5 STEPS TO SUCCESS THE SAFESMART JOURNEY

SCOPING

We thoroughly scope your business, and engage with key stakeholders to understand pain points, and challenges that have led you to seek a solution.



SOLUTION

We form the proposed solution based on the details acquired from the scoping phase. A general consensus is established with technical stakeholders on the functionality, price, and schedule to ensure the solution is suited to these requirements.



PROPOSAL

We present our commercial proposal, which provides product specification details, key features and deliverables, along with a commercial quote for final review and approval.



DELIVERY

Delivery phase captures everything subsequent to placing the purchase order. We complete the final design, obtain design approval, proceed with manufacture, quality assurance procedures, commissioning, and on-site delivery of the solution.



SUPPORT

We continue to support you through the life of the supplied solution. This includes the provision of supporting documentation, delivery of spare parts, product inspections and re-certification (if applicable), and ongoing product training (as required).





UK 0845 382 1000 | safesmartaccess.co.uk